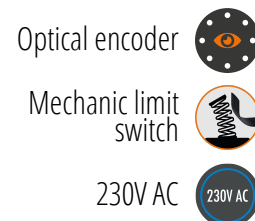


# KIT PRODUCT TECHNICAL DATASHEET

# KIT H30/645



## Composition KIT H30/645

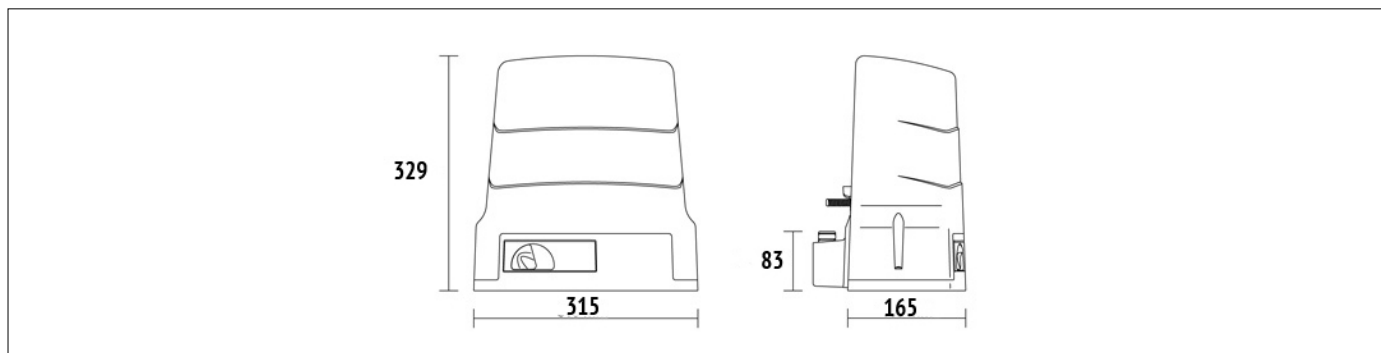
CODE	DESCRIPTION	QTY
<b>H30/643</b>	Electromechanical motor 230V AC irreversible ideal for sliding gates up to 600 kg with built-in control unit H70, optical encoder and mechanic limit switch.	1
<b>H93/RX22A/I</b>	Plug-in receiver fixe code 2 channels 433,92 Mhz (500 storable codes) for control unit series H70, B70, EDGE, CTRL and F70.	1
<b>T80/TX2</b>	Dual code transmitter (modality fixed code or rolling code), 433,92 Mhz. 2 channels, with radio for copy.	2
<b>R90/F2ES</b>	Pair of external photocells synchronized.	1
<b>FIFTHY/230</b>	LED flashing light series FIFTHY 230V - 115V with integrated antenna.	1
<b>R99/C/001</b>	Signboard "Automatic Opening".	1

## PRODUCT TECHNICAL SPECIFICATIONS

Max gate weight	600 kg
Power line supply	230V AC - 50Hz
Motor power supply	230V AC
Power rating	240W
Frequency of use	50%
Thrust	300N
Operating temperature	-20+55°C
Protection level	IP44
Reductor Type	Irreversible
Manoeuvre speed	9.5 m/min (0.16 m/s)
Motor thermal protection	150°C
Incorporated condenser	12,5 µF

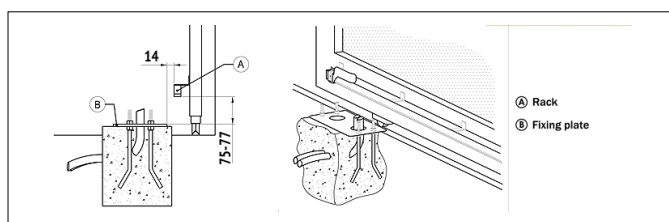
Limit switch	Mechanical
Onboard control unit	H70/104AC
Encoder	Optical
Type exit gear	Z15/mod 4
Maximum dimension product in mm (L x W x H)	315 x 165,8 x 329
Product weight packed (Kg)	12,1
Number items per pallet/box	44

# PRODUCT DIMENSIONS AND PREPARING FOR INSTALLATION

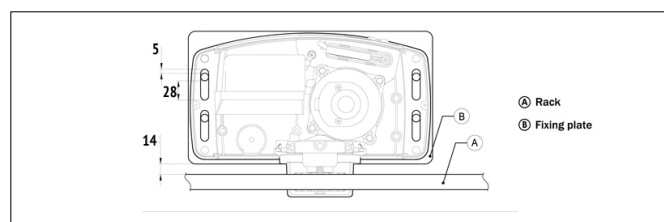


DIMENSIONS

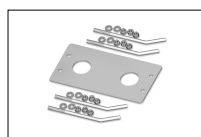
## PRODUCT PREPARING FOR INSTALLATION



PREDISPOSITION FOR STANDARD INSTALLATION



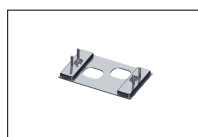
## PRODUCT ACCESSORIES



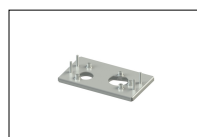
**KT214**  
Fixing plate with stay bolts and screws H30 series.



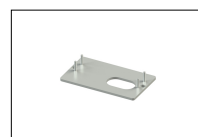
**KT214/SA**  
Adapter plate with stay bolts and screws H30 series.



**KT214/SC**  
Adapter plate with stay bolts and screws H30 series.



**KT214/SF**  
Adapter plate with stay bolts and screws H30 series.



**KT214/SN**  
Adapter plate with stay bolts and screws H30 series.



**KT221**  
Raised fixing plate for H30 series (+3,5 cm).



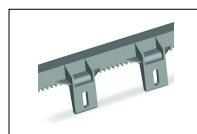
**GA550**  
Galvanised steel rack 22x22x1000 module 4.



**GA551**  
Galvanised steel rack 30x12x1000 module 4 with spacers and screws.



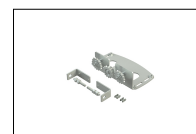
**GA554**  
Pocket of 6 spacers (2,5 cm) and screws.



**GA553**  
Nylon rack module 4 with 6 connectors L.1000.



**GA557**  
Roger Technology nylon rack module 4 with 6 connectors L.1000.



**LT330**  
Chain drive kit for H30 - BH30 series.



**LT334**  
1/2" X 5/16" 5 meter chain piece for LT330 with joint.



**LT335**  
1/2" X 5/16" joint for LT334 chain section.



**MC773**  
Kit mechanical limit switch for control unit H70/103AC, H70/104AC, B70/1DC, B70/1DCHP.